

# **Problem Solving: Moving Guided Pathways Online**

## *Webinar Series*

Wednesday, April 29  
11 a.m. - 12 p.m.

# Technical Announcements

- Webinar Technology
  - You will be MUTED for this webinar
  - Your video will be OFF upon entry
  - If you are joining by phone and computer/tablet, please connect your phone to your computer/tablet (#participantID#)
- For any technology issues, please ask for help in the chat and we will message you privately for support: e.g. *TECH I can't hear*

*What is your motivation for doing the work you do?*

# What is your WHY?

# The Career Ladders Project Team



**Kris Palmer**  
Senior Director



**Sia Smith-Miyazaki**  
Director



**Valeria Torres**  
Program Coordinator



**Naomi Castro**  
Senior Director

*Career Ladders Project promotes equity-minded community college redesign*

# Welcome to the GP problem-solving webinar!

- Purpose
  - Provide peer support and problem-solving opportunities to address emerging issues and equity challenges related to GP
- Materials
  - Video recording, slides, and links will be shared via email & posted on the Vision Resource Center

*If you did not register using the interest form, please type your email in the chat so we can share these resources with you*

# How to ask questions during the webinar

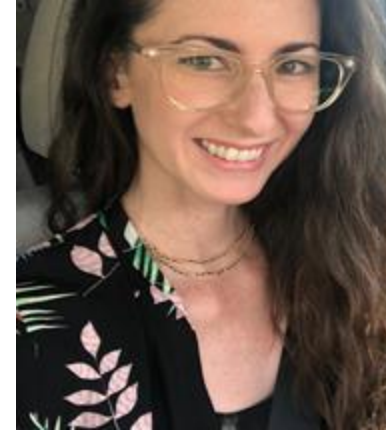
Use the chat function to type your question

- **Question for a panelist** indicate the college before your question  
*Santa Ana: What did you...*
- **General question** regarding Guided Pathways  
*GENERAL What are colleges....?*
- **An approach** you'd like to share  
*IDEA I (Your name) have an approach to the question regarding....*
- **Tech issue** *TECH I can't hear*

# Presenters for today's webinar



**Val Martinez Garcia**  
Vice President of  
Student Services



**Stephanie Clark**  
Guided Pathways  
Coordinator

Headcount  
7019

62.4%  
Hispanic

Rural

70% on  
financial  
aid

45%  
courses  
OER

**3,464 square mile service  
area**

(almost the size of Delaware  
and Rhode Island combined)



2019



2020



WEST HILLS COLLEGE  
LEMOORE

Once you **go here**,  
you can **go anywhere**™



# West Hills College Lemoore Framework

**Get Strong**

Prepare students to enroll in educational or career pathway.

**Start Strong**

Guide the start of student educational or career pathway.

**Stay Strong**

Support student persistence of educational or career pathway.

**Finish Strong**

Foster student completion of educational or career pathway.

**WHCL North Star**  
Student Learning & Achievement



**1 Focus on Specific Data Points**

Course completion, degree/certificate completion, transfer, and employment



**2 Build on Existing Initiatives and Strategies**



**#1**

Integrated Student Success Plan



**#2**

Vision for Success



**#3**

Title V Objectives & Achieving the Dream



**#4**

Guided Pathways Plan

**3 Use Outcomes, Program Review, and Institutional Planning for Resource Allocation Decisions**



Requests for additional resources must be tied directly to results and initiatives that will improve student learning and achievement.

Source : <https://en.wikipedia.org/wiki/Infographic>

There is no “I” in TEAM; but there is an  
“I” in COVID.



**For every 100 new students who entered XYZ  
Community College (full and part-time)...**



Within three years, 10 earn an XYZ degree or certificate



# WHCL Student Services Managers Ground Rules for Move to Remote Operations

1

Keep the  
Strong  
Initiative and  
North Star in  
Focus

2

Don't recreate  
the wheel

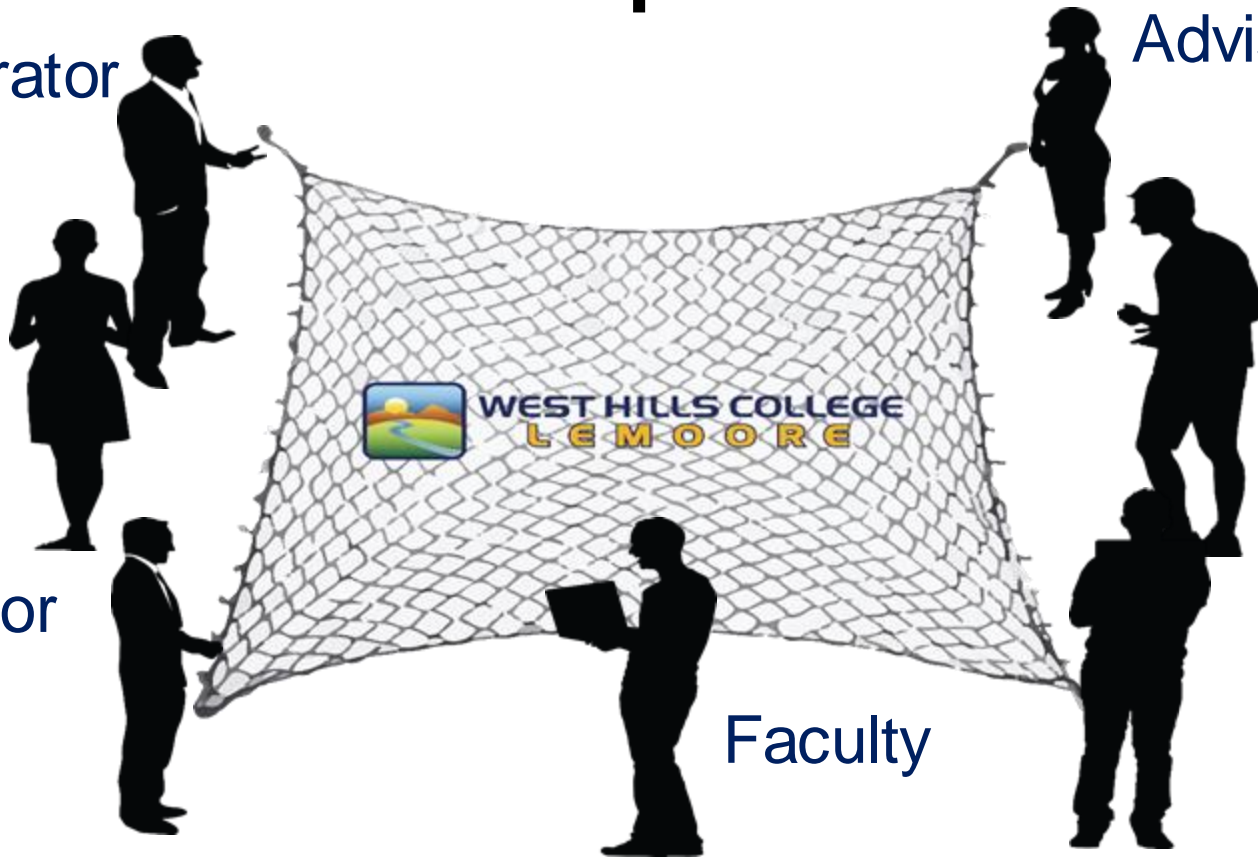
3

Accept  
change and  
the speed it is  
going to come

# From Completion to

Administrator

Advisor



Counselor

Faculty

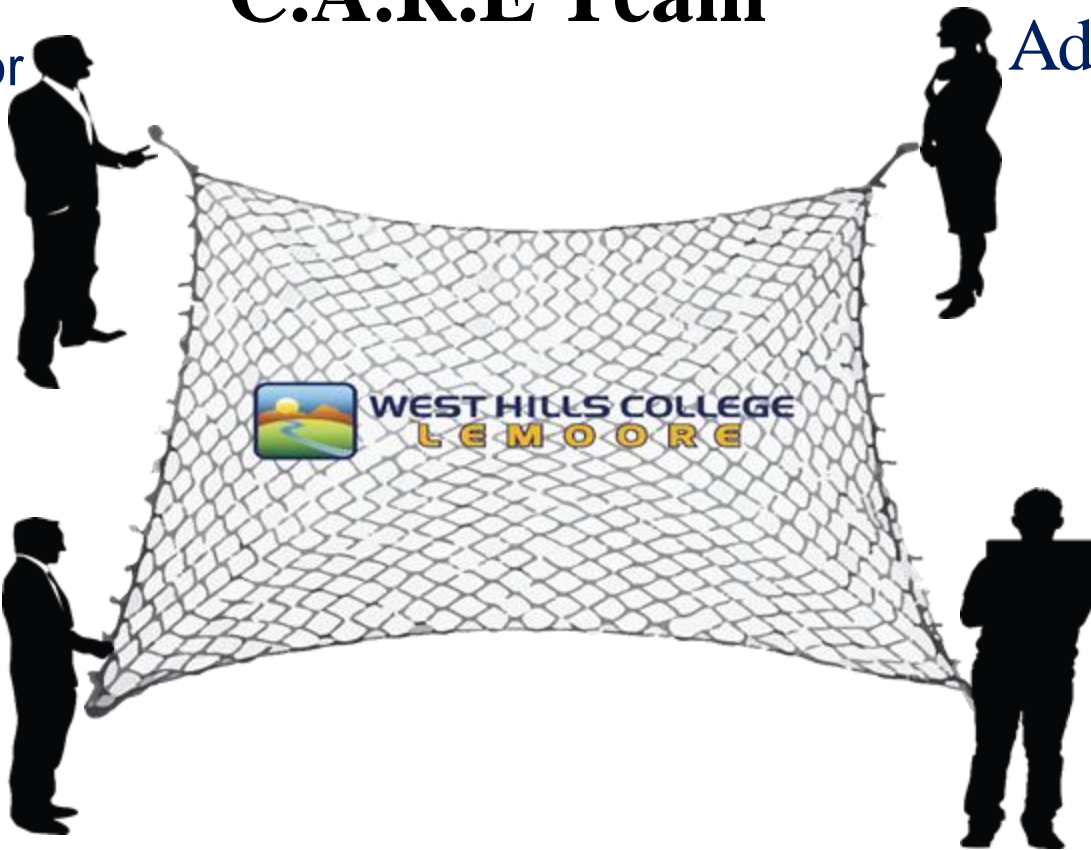
# C.A.R.E Team

Administrator

Advisor

Counselor

SI Leader



WEST HILLS COLLEGE  
LEMOORE

# Holistic Approach

## Case Management Tools



### URGENT & CONFIDENTIAL

- Conduct/ discipline issues
- Plagiarism/ cheating
- Sexual misconduct (Title IX)
- Unusual or concerning behavior
- DRAW Referral

Student Conduct/Concern Report

### FYI

- Important conversations with students
- Referrals to services: counseling, academic support, financial aid, etc.
- Recommendations for registration, major selection, career advising, etc.
- Replaces Early Alert

Next Gen inspire Update

### TYPICAL INTERACTIONS

- Excused absences
- Interactions, such as scheduling an appointment, inquires, etc.
- Conversations that do not relate to a student's academic performance

No Report Needed



# Reflections on Change



Culture Eats Strategy for Lunch



Trust is earned – Relationships



Admit when you're wrong – It's ok to  
Change Direction.

# Final Reflection

Be True To Who You  
Are.



**Don't Be Someone You Are Not.**

*Write your questions in the chat and we will read them aloud*

# Questions?

# Stretch!

# Santa Ana College - Moving Guided Pathways Online

## *2019-20 Goals*

- Meta-Majors
- Success Teams
  - Fall: Pilot Future Educators success team
  - Spring: Scale success teams across pathways



# Pathways



## CREATING OUR WORLD

Art, Media & Performance

EXPLORE →



## DESIGN, MAKE & MOVE

Automotive, Manufacturing & Engineering Technology

EXPLORE →



## MONEY MATTERS

Business & Paralegal

EXPLORE →



## FUTURE EDUCATORS

Child Development, Teaching & Library Technology

EXPLORE →



## STEM

Computers, Math & Science

EXPLORE →



## PEOPLE, IDEAS & CULTURE

Humanities, Social Sciences & Languages

EXPLORE →



## HELPING OTHERS

Public Health & Safety Services

EXPLORE →



## BUILDING BRIDGES

Continuing Education

EXPLORE →



SANTA ANA COLLEGE

# Santa Ana College - Moving Guided Pathways Online

- Site Visits *remotely* - information gathering
- Core Team *monthly* - goal setting, tough conversations
- Deans / GP Coordinator meetings *weekly*
- Executive Committee meetings *monthly*
- Implementation Teams
- Virtual Events



# Santa Ana College - Moving Guided Pathways Online

- Site Visits - *identified communication as a major area of need*





# Santa Ana College - Moving Guided Pathways Online

- Site Visits - *identified communication as a major area of need*
- Core Team - *agreed to host GP Forum and identified 5 priority areas, two teams potentially will be re-org'd*



# Santa Ana College - Moving Guided Pathways Online

- Site Visits - *identified communication as a major area of need*
- Core Team - *agreed to host GP Forum and identified 5 priority areas, two teams potentially will be re-org'd*
- Deans / GP Coordinator meetings - *focused on goals and support/advocacy across campus*



# Santa Ana College - Moving Guided Pathways Online

- Site Visits - *identified communication as a major area of need*
- Core Team - *agreed to host GP Forum and identified 5 priority areas, two teams potentially will be re-org'd*
- Deans / GP Coordinator meetings - *focused on goals and support/advocacy across campus*
- Executive Committee meetings - *identified budget for 20-21, high-level goals, including personnel for major tasks*



# Santa Ana College - Moving Guided Pathways Online

## *Virtual Events Cont.*

- Virtual Events - *hope to replicate pre-Covid-19 campus forums.*
  - *GP Forum - 5 priority areas*
    - *Mapping*
    - *Success Teams*
    - *Marketing & Communication*
    - *Learning & Engagement*
    - *Starfish (tracking)*



# Santa Ana College - Moving Guided Pathways Online

## *Virtual Events*

- Virtual Events - *hope to replicate pre-Covid-19 campus forums.*
  - *Success Teams*
    - *Part 1: Meet the Pilot Teams*
    - *Part 2: Success Team Launch*



# **Santa Ana College - Moving Guided Pathways Online**

## ***New Guided Pathways work during Covid-19***

- Learning & Engagement Team addressing Pillar 4 designing Professional Development week around Digital Literacy & Equity.
- Bringing together Equity Practitioners to collaborate on equity-minded practices in the classroom.
- Digital Newsletter, GP Forum, Re-org discussions, Goal-setting for 20-21 AY.
- Starfish inventory for tracking and Success Teams roles/goals being defined.
- Website redesign work to reflect academic clusters and not organizational structure.



# Santa Ana College - Moving Guided Pathways Online

## *Takeaways*

- Take advantage of what this Covid-19 period is highlighting.
- Inventory strengths and weaknesses.
- Easy wins! Very easy to focus on virtual support, how can we carry this work over for improving our student experience after the crisis?



*Write your questions in the chat and we will read them aloud*

# Questions?



# Join us for our upcoming webinars

- **Redesigning with Transitions in Mind: A Guided Pathways Workshop**
  - *Friday, May 1st from 10 a.m. to 12 p.m.*
- **Problem Solving: Moving Dual Enrollment Online - Webinar Series**
  - *Every other Thursday, starting May 7th from 10 a.m. to 11 a.m.*
- **Moving Student Supports Online Webinar Series**
  - *Every other Wednesday, starting May 13th from 2 p.m. to 3 p.m.*

THANK YOU  
for joining us today.

*This webinar is part of a series produced by Career Ladders Project with funding from the California  
Community Colleges Chancellor's Office.*

[careerladdersproject.org](https://careerladdersproject.org)