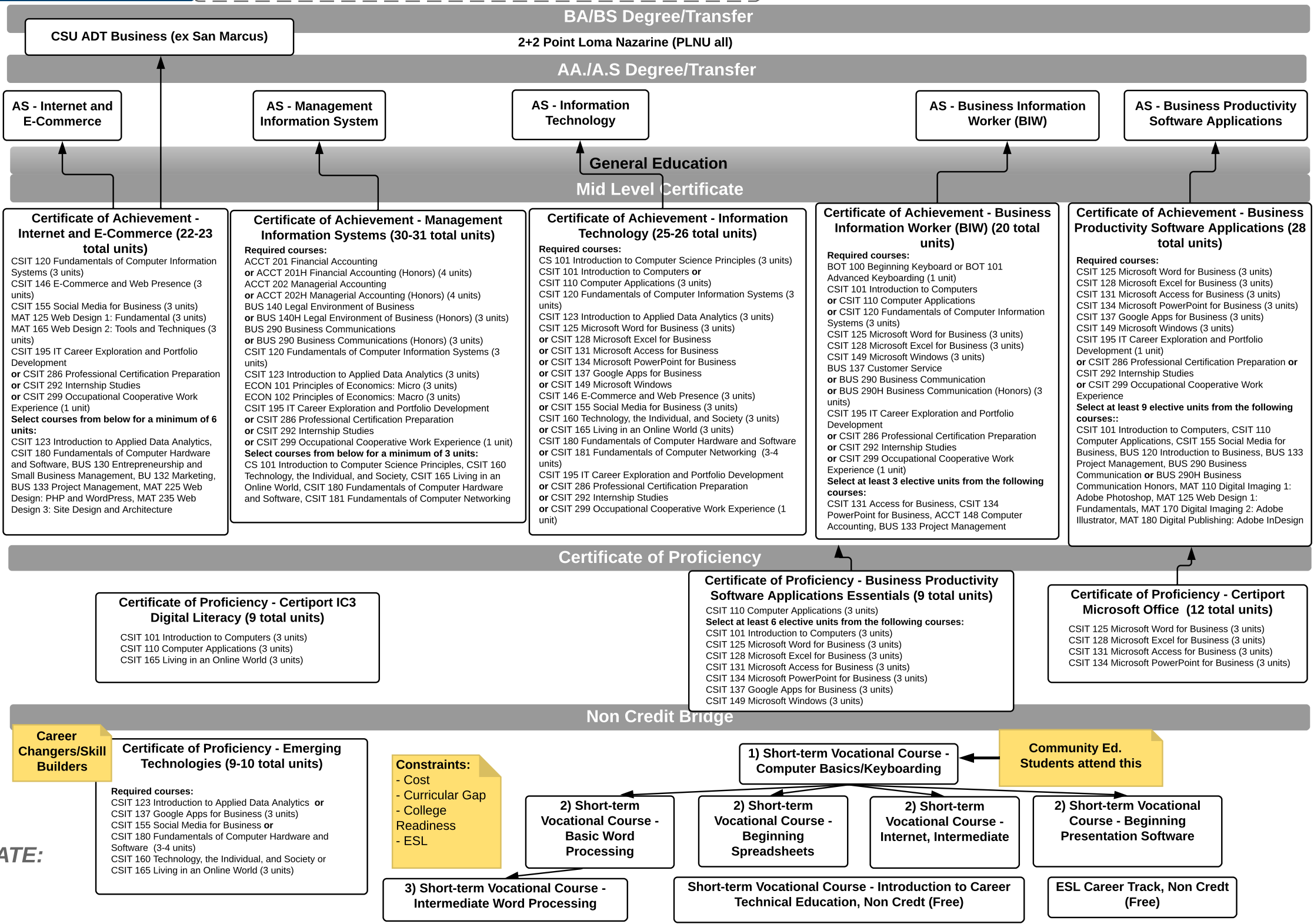


### JOBS AND WAGES

- ADVANCED LEVEL**
- Business Operations Specialists, \$35.38/hr
  - Computer and Systems Analysts, \$43.06/hr
  - Computer and Information Systems Managers, \$72.28/hr
  - Information Security Analyst, \$47.07/hr
  - Network and Computer Systems Administrator, \$39.63/hr
- MID LEVEL**
- Computer User Support Specialist, \$27.21/hr
- ENTRY LEVEL**
- Customer Service Representative, \$17.52/hr
  - Executive Secretary and Executive Administrative Assistant, \$28.21/hr
  - Hotel, Motel, and Resort Desk Clerks, \$12.64/hr
  - Office Clerks, \$15.97/hr
  - Receptionist and Information Clerk, \$15.13/hr
  - Secretary and Administrative Assistant, \$18.40/hr

- INDUSTRY CERTIFICATIONS**
- ADVANCED LEVEL**
- MID LEVEL**
- MS OS Expert
  - CET ASS Project Management
  - COMPTIA Project
- ENTRY LEVEL**
- Microsoft Office Specialist (expert level)
- NONCREDIT**



**DRAFT DATE:**  
 2/5/2018