

# BRIDGING THE GAP

*Taking Shared Responsibility for Student Success*

Connie Tan, EdInsights

Katherine Bergman, Career Ladders Project

Kris Palmer, Career Ladders Project



# Career Ladders Project

works in partnership with CA Community Colleges to provide educational and career advancement opportunities for all Californians.

We foster these opportunities through research, policy initiatives and strategic assistance to colleges and their K12, university, workforce development and community partners.

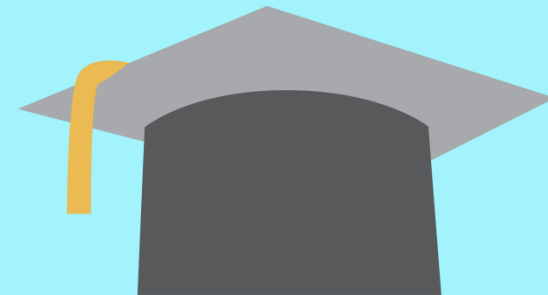


**CAREER LADDERS PROJECT**  
FOSTERING EDUCATIONAL AND CAREER ADVANCEMENT FOR CALIFORNIANS

# EdInsights: About Us

- EdInsights is a research and policy center devoted to student success
- Our mission is to inform and improve policymaking and practice within and across K-12 and postsecondary institutions by conducting:
  - Policy research
  - Program evaluation
  - Capacity building

# BRIDGING THE GAP: STUDENT GOALS



**Creating momentum**  
with college and career readiness



**Gaining momentum**  
from interest to enrollment



**Maintaining momentum**  
to persist and complete credential

Engage in rigorous, aligned curricula

Develop college knowledge and readiness competencies

Graduate college and career ready

Apply directly to postsecondary

Apply for financial aid

Select and enroll in postsecondary

Enter into aligned program of study

Enroll in 12+ credits per term

Complete program of study prerequisites

# BRIDGING THE GAP: SHARED INSTITUTIONAL RESPONSIBILITY



**Creating momentum**  
with college and career readiness



**Gaining momentum**  
from interest to enrollment



**Maintaining momentum**  
to persist and complete credential

Linked Learning pathways aligned with Common Core and programs of study

Acceleration strategies into postsecondary

College-going culture

Postsecondary and financial aid application support

Transition curricula

Multiple measures for postsecondary placement

Transition support programs

Programs of study aligned with Linked Learning and career pathways

Acceleration strategies for on-time completion

College-completion culture

# Bridging the Gap Initiative

## *Investment Goals*

- Strong intersegmental **partnerships** between K-12 districts, community colleges, and CSU campuses
- Integrated **policies and practices** that provide greater structure and support for students
- Systems level **scale**

# Bridging the Gap Initiative

## *Initiative Design*

---

### **Phase 1: Planning Grants**

January – September 2016

Up to \$150,000

---

### **Phase 2: Implementation Grants**

October 2016 – September 2018

Up to \$500,000

# BRIDGING THE GAP GRANTEES

- East Bay
  - Peralta Community College District (lead)
  - CSU East Bay
  - Oakland Unified School District
  - Berkeley Unified School District
- Long Beach
  - CSU Long Beach (lead)
  - Long Beach City College
  - Long Beach Unified School District
  - City of Long Beach



# Technical Assistance

- Research
- BtG element clarification, engagement
- Meeting and convening facilitation
- Mapping and white boarding (assets, pathway)
- Help with assessment

# Bridging the Gap Initiative

## *Resources*

- EdInsights
  - Andrea Venezia: [venezia@csus.edu](mailto:venezia@csus.edu)
  - Connie Tan: [connie.tan@csus.edu](mailto:connie.tan@csus.edu) 916-278-3929
- Career Ladders Project 510-268-0566
  - Linda Collins [lcollins@careerladdersproject.org](mailto:lcollins@careerladdersproject.org)
  - Kris Palmer [kpalmer@careerladdersproject.org](mailto:kpalmer@careerladdersproject.org)
  - Katherine Bergman  
[kbergman@careerladdersproject.org](mailto:kbergman@careerladdersproject.org)