

# Quality Control Technician

Prepare for this high demand occupation at your local community college



**Job Projections:** Employment of quality control technicians reflects the continuing need to have quality assurance testing in a variety of manufacturing industries, particularly in pharmaceuticals and medical equipment and supplies.

**Bay Area Median Wage:**

**\$24.84**  
per hour

**Sample Employers:**

- Ablexis, San Francisco
- California Environmental Associates, San Francisco
- Gladstone Institutes, San Francisco

**Job Description:** Conduct tests to determine quality of raw materials, bulk intermediate and finished products. May conduct stability sample tests.

**To research more about this occupation visit:**  
<http://www.onetonline.org/link/summary/19-4099.01>

*This project is funded by a U.S. Department of Labor Trade Adjustment Assistance Community College Career Training grant to the East Bay. This project's cost to produce was \$4,203 (0.76% of project) from a grant awarded under the Trade Adjustment Assistance Community College and Career Training (TAACCT) Grants, as implemented by the U.S. Department of Labor's Employment and Training Administration. Design it-Build it-Ship it (DBS) is an equal opportunity employer / program and auxiliary aids and services are available upon request to individuals with disabilities.*

East Bay  
Community  
Colleges  
Preparing For  
This Career

**A Ohlone College**

Associate in Science Degree,  
Biotechnology



# BIOTECHNOLOGY

The Biotechnology Sector translates into high paying jobs for individuals with post-secondary education.

**HIGH DEMAND  
GROWTH  
WAGE**

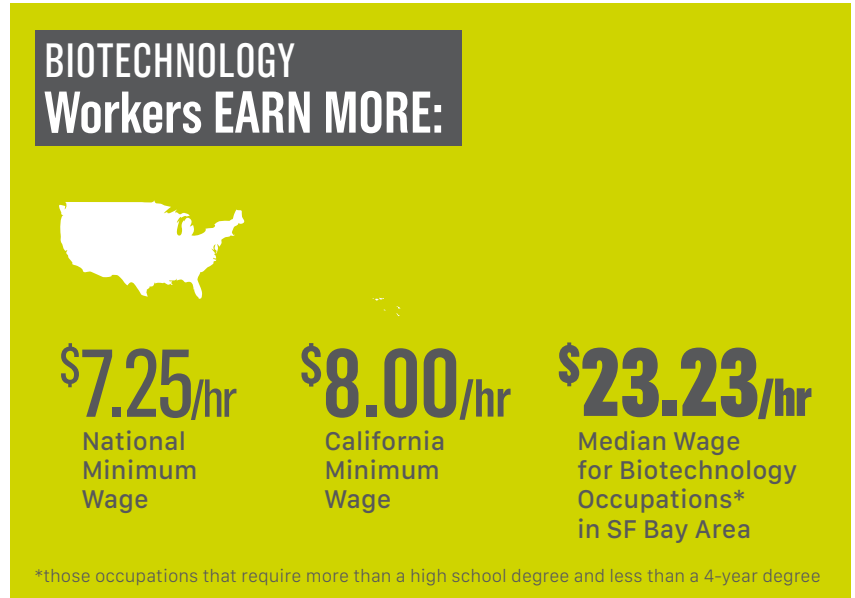
## What is driving growth in the Biotechnology Sector?

Investments in bioscience development initiatives

Advancing commercialization of research discoveries

Building research and development capacity

Actively addressing bioscience's need for early-stage capital



### WHAT JOBS ARE IN THE BIOTECHNOLOGY SECTOR?

- Research** (Microscope icon)
- Pharmaceuticals** (Pill icon)
- Medical Devices** (Plus sign icon)
- Distribution** (Truck icon)

### BAY AREA SNAPSHOT

What can workers with some post-secondary experience expect?

#### Production Specialist



**\$29/hr** 761 open jobs by 2022

#### Laboratory Technician



**\$25/hr** 266 open jobs by 2022

#### Technical Services Assistant



**\$22/hr** 367 open jobs by 2022

#### Manufacturing Assistant



**\$20/hr** 434 open jobs by 2022



Career Ladders Project

June 2014

Data and information sources: CCC Doing What Matters for Jobs and the Economy, California Employment Development Department, Economic Modeling Specialists International (EMSI), Alameda County WIB