

# East Bay Transportation and Logistics Partnership

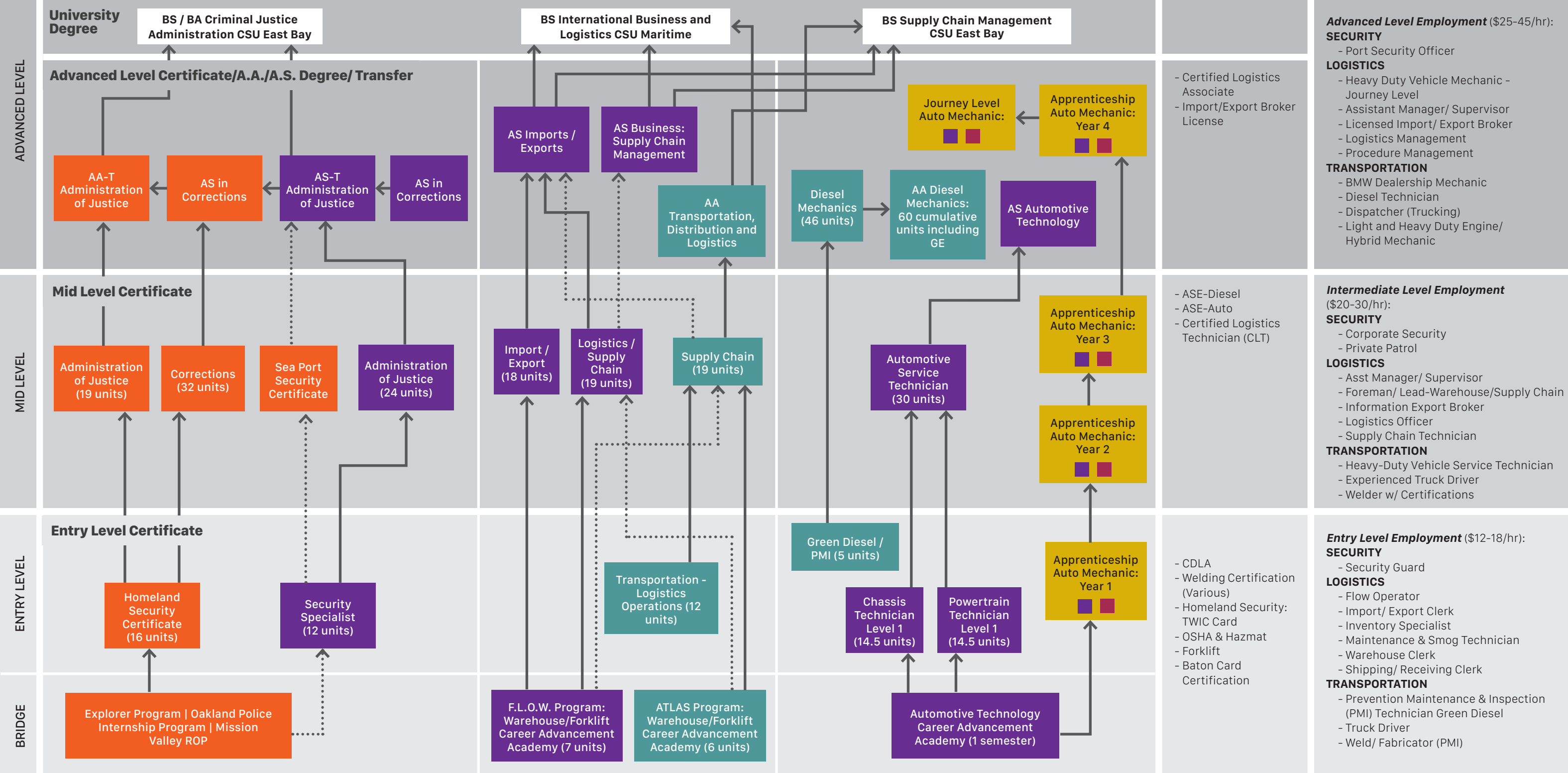
Transportation and Logistics Regional Community College Offerings



## ACADEMIC PROGRAM OF STUDY

### INDUSTRY CERTIFICATION

### JOBS & WAGES



**INDUSTRY CERTIFICATION**

- Certified Logistics Associate
- Import/Export Broker License
- ASE-Diesel
- ASE-Auto
- Certified Logistics Technician (CLT)
- CDLA
- Welding Certification (Various)
- Homeland Security: TWIC Card
- OSHA & Hazmat
- Forklift
- Baton Card Certification

**JOBS & WAGES**

**Advanced Level Employment (\$25-45/hr):**

**SECURITY**

- Port Security Officer

**LOGISTICS**

- Heavy Duty Vehicle Mechanic - Journey Level
- Assistant Manager/ Supervisor
- Licensed Import/ Export Broker
- Logistics Management
- Procedure Management

**TRANSPORTATION**

- BMW Dealership Mechanic
- Diesel Technician
- Dispatcher (Trucking)
- Light and Heavy Duty Engine/ Hybrid Mechanic

**INDUSTRY CERTIFICATION**

- ASE-Diesel
- ASE-Auto
- Certified Logistics Technician (CLT)

**JOBS & WAGES**

**Intermediate Level Employment (\$20-30/hr):**

**SECURITY**

- Corporate Security
- Private Patrol

**LOGISTICS**

- Asst Manager/ Supervisor
- Foreman/ Lead-Warehouse/Supply Chain
- Information Export Broker
- Logistics Officer
- Supply Chain Technician

**TRANSPORTATION**

- Heavy-Duty Vehicle Service Technician
- Experienced Truck Driver
- Welder w/ Certifications

**INDUSTRY CERTIFICATION**

- CDLA
- Welding Certification (Various)
- Homeland Security: TWIC Card
- OSHA & Hazmat
- Forklift
- Baton Card Certification

**JOBS & WAGES**

**Entry Level Employment (\$12-18/hr):**

**SECURITY**

- Security Guard

**LOGISTICS**

- Flow Operator
- Import/ Export Clerk
- Inventory Specialist
- Maintenance & Smog Technician
- Warehouse Clerk
- Shipping/ Receiving Clerk

**TRANSPORTATION**

- Prevention Maintenance & Inspection (PMI) Technician Green Diesel
- Truck Driver
- Weld/ Fabricator (PMI)

**Key**

- Pathways (within Programs)
- DBS Programs
- Optional Pathways
- ▨ Programs in development
- College of Alameda
- Contra Costa College
- Merritt College
- Apprenticeship: Auto Mechanic
- Chabot College

This project is funded by a U.S. Department of Labor Trade Adjustment Assistance Community College Career Training grant to the East Bay. This product's cost to produce was \$4,203 (0.76% of project) from a grant awarded under the Trade Adjustment Assistance Community College and Career Training (TAACCCT) Grants, as implemented by the U.S. Department of Labor's Employment and Training Administration. Design it-Build it-Ship it (DBS) is an equal opportunity employer / program and auxiliary aids and services are available upon request to individuals with disabilities.

# TRANSPORTATION & LOGISTICS

The Transportation & Logistics Sector translates into high paying jobs for individuals with post-secondary education.

**HIGH DEMAND  
GROWTH  
WAGE**

## California's Transportation & Logistics Sector Drives the Economy

California exports to approximately 225 foreign markets around the globe

California ranks first in the nation for exporting computers, electronic products and food

Exports from the SF Bay Area amounted to \$50 billion in 2012

## Transportation & Logistics Workers EARN MORE:



**\$7.25/hr**  
National Minimum Wage



**\$8.00/hr**  
California Minimum Wage



**\$22.30/hr**  
Median Wage for T&L Occupations\* in SF Bay Area

\*those occupations that require more than a high school degree and less than a 4-year degree



## WHAT JOBS ARE IN THE T&L SECTOR?



Warehouse



Trade



Logistics



Security

## BAY AREA SNAPSHOT

What can workers with some post-secondary experience expect?

### Logistics Management Consultants



**\$29/hr**

**677** open jobs by 2022

### Diesel Technicians/Mechanics



**\$26/hr**

**520** open jobs by 2022

### Supply Chain Technician



**\$23/hr**

**214** open jobs by 2022

### Inventory Specialist



**\$22/hr**

**8,350** open jobs by 2022



Career Ladders Project

June 2014

Data and information sources: CCC Doing What Matters for Jobs and the Economy, California Employment Development Department, Economic Modeling Specialists International (EMSI), Alameda County WIB